


QUICK-STEP® INCIZO® VENEER PROFILE*Parquet*

<u>Order code</u>	<u>Photo</u>	<u>Dimensions</u>	<u>Pack quantities</u>
QSWINCP(-)MD215		16 mm x 54 mm x 2150 mm	1 (knife + rail and screws included)

Product description

The profile with Incizo® technology provides a simple solution for a perfect finish to your Quick-Step® floor. You can create any profile imaginable with the knife supplied: expansion profile, adapter profile, transition profile and also an edge profile. Furthermore the Incizo profile can also be used to finish your stairs.

The Incizo® profile provides a handy and economic solution.

Contents: Incizo profile, multifunctional rail, screws and a handy knife.

Applications

Wood is the main component of your Quick-Step® floor. Room humidity may vary from season to season, so it is vital that the floor is able to expand and contract. The floor must be able to expand and contract on all sides. This is why an expansion gap of 8-10 mm must be provided around the floor. The Quick-Step® Incizo® profile can be used to finish this gap.

Quick-Step® also has a range of skirting boards for the perfect finish for the expansion gap (against a wall). You can find more information about our Quick-Step® skirting boards at www.quick-step.com).

The Quick-Step® Incizo® profile can be used in 5 different applications.

√ Expansion profile

The Quick-Step® expansion profile is used to join two floors in: doorways, door openings, L-shaped rooms or rooms where the floor is greater in distance than 12 m in length or width.



√ Adapter profile

The Quick-Step® adapter profile ensures a smooth transition from a Quick-Step® floor and an alternative floor covering at a lower height, like tiles or vinyl.



√ Edge profile

The Quick-Step® edge profile is used to finish the edge of a floor against a vertical surface such as sliding doors, low open windows, a slightly higher doorstep or tiled floor.



√ Transition profile

The Quick-Step® transition profile can be used to cover the transition to a fixed carpet, for example.



√ Stair profile

You can also cover your stairs or steps with Quick-Step® planks, in combination with the Incizo profile as a stair nose. In this case, an aluminium subprofile for application on stairs is needed, to be ordered separately.



Please refer to the sales sheet of the Incizo stairs to learn more about installation as a stair profile.

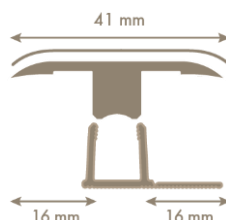
Specifications

- √ Excellent wear and scratch-resistant real veneer surface
The durable veneer makes the Quick-Step® Incizo® profile resistant to scratches and wear.
- √ No inconvenient seams compared to other multifunctional profiles
- √ Watertight glued HDF base
The main component of the Quick-Step® Incizo® profile is wood. The MDF base is resistant to dampness, which ensures your profile remains in perfect condition.
- √ Multifunctional rail
The rail supplied can also be used in installations with considerable height differences, by bending the lip.
- √ Matching accessories
The Quick-Step® Incizo® profile is available in a design and surface structure that matches your floor perfectly.
- √ Economical
You can use the profile leftovers in other applications, so there is less waste.
- √ Easy
Another added benefit of this multifunctional profile is that you always have the right solution on hand.
- √ Complete package
The rail, screws and the knife are supplied together with the multifunctional profile.



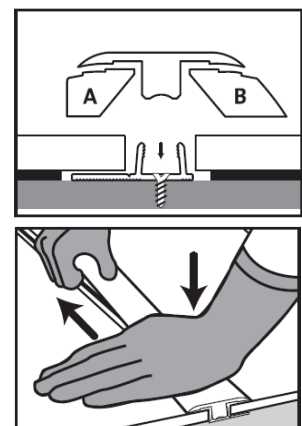
Instructions for use

- √ Expansion profile

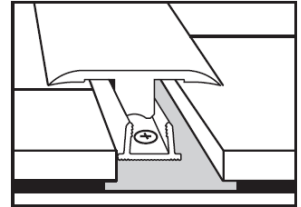


Saw the profile to the right length. Cut away section A and section B with the knife to make the expansion profile.
Note: cut both lengths first and then remove both blocks.

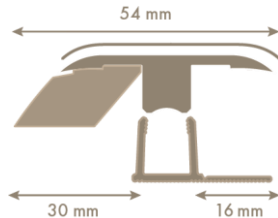
Make sure you leave enough room between the two surfaces that link the profile when installing the floor. Take into account the expansion joint between the protruding legs of the rail (where the profile will go) and the floor. Saw the plastic rail to the right length and place it centrally on the subfloor in the open space between the two floor surfaces. The rail can be attached in different



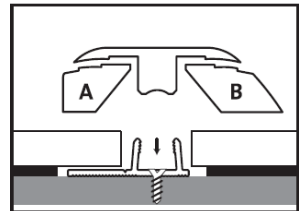
ways: see further. Press the profile gently from one side to the other into the rail. Press until it is against the floor.



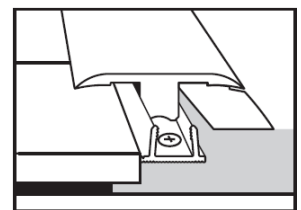
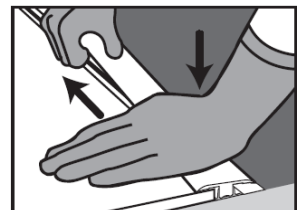
√ Adapter profile



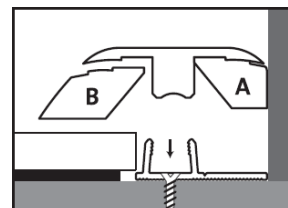
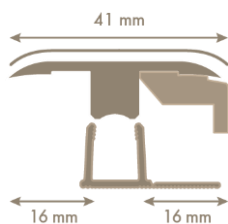
First saw the profile to the right length. Cut section A away with the knife to make an adapter profile.



Mark on the subfloor where you want the Quick-Step® floor to go. Let the underlay continue to just before this line: it is better to place the rail (in which the adapter profile will be clamped) on the subfloor later. Make sure that you lay the Quick-Step® floor a sufficient distance away from the edge of the underlay: take into account the expansion joint between the protruding legs of the rail (where the profile will go) and the floor. Attach the plastic rail to the subfloor, with the long lip in the direction of the floor. This can be done in various ways: see further. Press the profile gently from one side to the other in the rail. Press until it is against the floor.



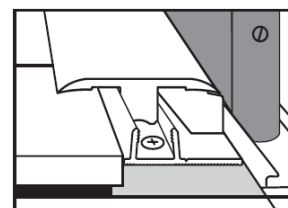
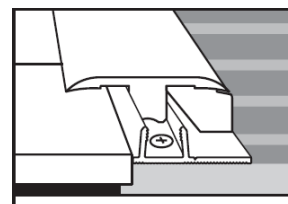
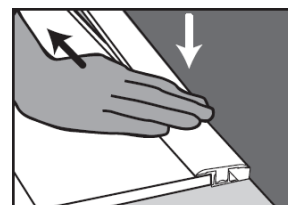
√ Edge profile / Transition profile



First saw the profile to the right length. Cut section B away with the knife to make an edge profile.

Installing against a vertical surface:

Saw the plastic rail to the right length and place it with the lip against the vertical surface, on the base. The lip acts as a distance-holder. Attaching the rail: see further. Make sure there is a sufficient expansion joint between the floor and the legs of the rail in which the profile will be clamped. Press the profile gently from one side to the other in the rail. Press until it is against the floor.

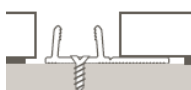


Installing against a horizontal surface:

Identical to the installing of the adapter profile.

√ Installation of the multifunctional rail

- Normal installation:



- Installation with considerable height differences (from 17 mm onwards): Break off the long lip from the rail at the groove, across the whole length of the rail. Place the broken-off piece under the rail to make up for the height difference with the floor. Attach both pieces firmly to the ground.



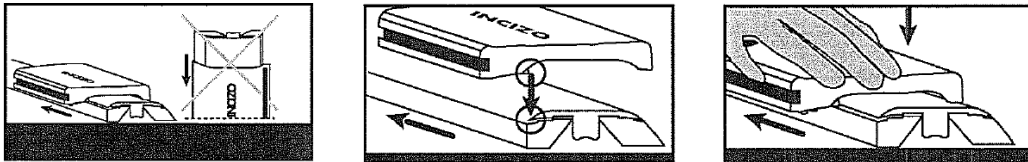
- How to attach?

- With screws:
The rail can be attached to the subfloor with screws. Use the pre-drilled holes between the legs of the rail for this. Be careful of underground pipes.
- With Quick-Step® ONE4ALL GLUE:
All rails can be attached firmly to the subfloor with this extra-strong glue. You do not need to worry about underground pipes as you do when using screws. This glue also has a very high initial bonding strength which means the Incizo® profile can easily be pressed into the rail immediately.



√ Using the knife

BE CAREFUL: the edges of the cut profile and the knife are sharp, always wear gloves.



Always place the profile horizontally on a stable base when cutting.

Place the slitter at the top of the profile so that the knife below the slitter goes in the narrow opening on the head of the profile.

When cutting the slitter, always keep the profile pressed level and pull it over the profile in the direction of the arrow.